

THE HISTORIC Y AND STUDIO Y

Neighborhood Parking Map, October 2019

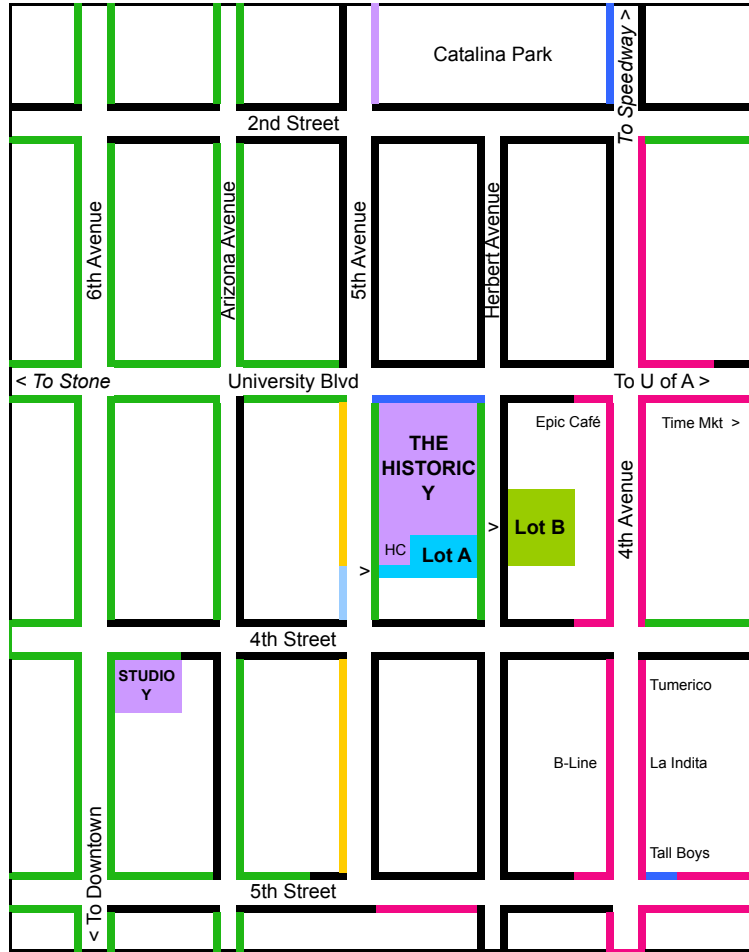
Legend:

- THE HISTORIC Y**
738 N. 5th Avenue and
300 E. University Blvd.

- Lot A** - Unrestricted parking for
The Historic Y tenants & visitors -
enter from 5th Avenue only

- Lot B** - Parking for The Rogue
Theatre Performances Only
enter from Herbert Avenue only

- HC** Disabled accessible parking
space in northwest corner of Lot A
directly south of The Historic Y



Parking available at all times:

- Street parking ok 24 hrs (no restrictions)

- Metered parking M-F 8 a.m. to 5 p.m. \$1/hour. Free and unrestricted at other times.
(rate and hours of operation subject to change)

- Short term street parking as posted (e.g. loading, drop-off, 1 hr, 2 hr, etc.)
during designated daytime hours (no restrictions at other times)

Day parking only:

- Street parking ok **M-F 7 a.m. to 5 or 6 p.m. only - as posted** (not allowed at other times)

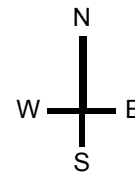
Evening and weekend parking only:

- Street parking ok **all times EXCEPT M-F 8 a.m. to 5 p.m.**

- Street parking ok **M-Sat 5 p.m to 9 p.m. and Sun 7 a.m. to 3 p.m.**

Parking not allowed:

- No parking zone or 24 hr permit parking only



Lot A contains one accessible parking space and a ramp leading to Scoundrel and Scamp Theatre and from there direct access to Main Lobby M-F 8 a.m. to 2 p.m. or as arranged in advance.

There are 6 reserved parking spaces on-site along 5th Avenue that are available after hours as posted.

There is one 15-minute delivery space next to the courtyard entrance on University.

The Historic Y provides this map as a courtesy only and does not guaranty the accuracy of the information contained herein. Please verify parking restrictions by carefully reading posted signage. Restrictions are subject to change at any time and without notice.